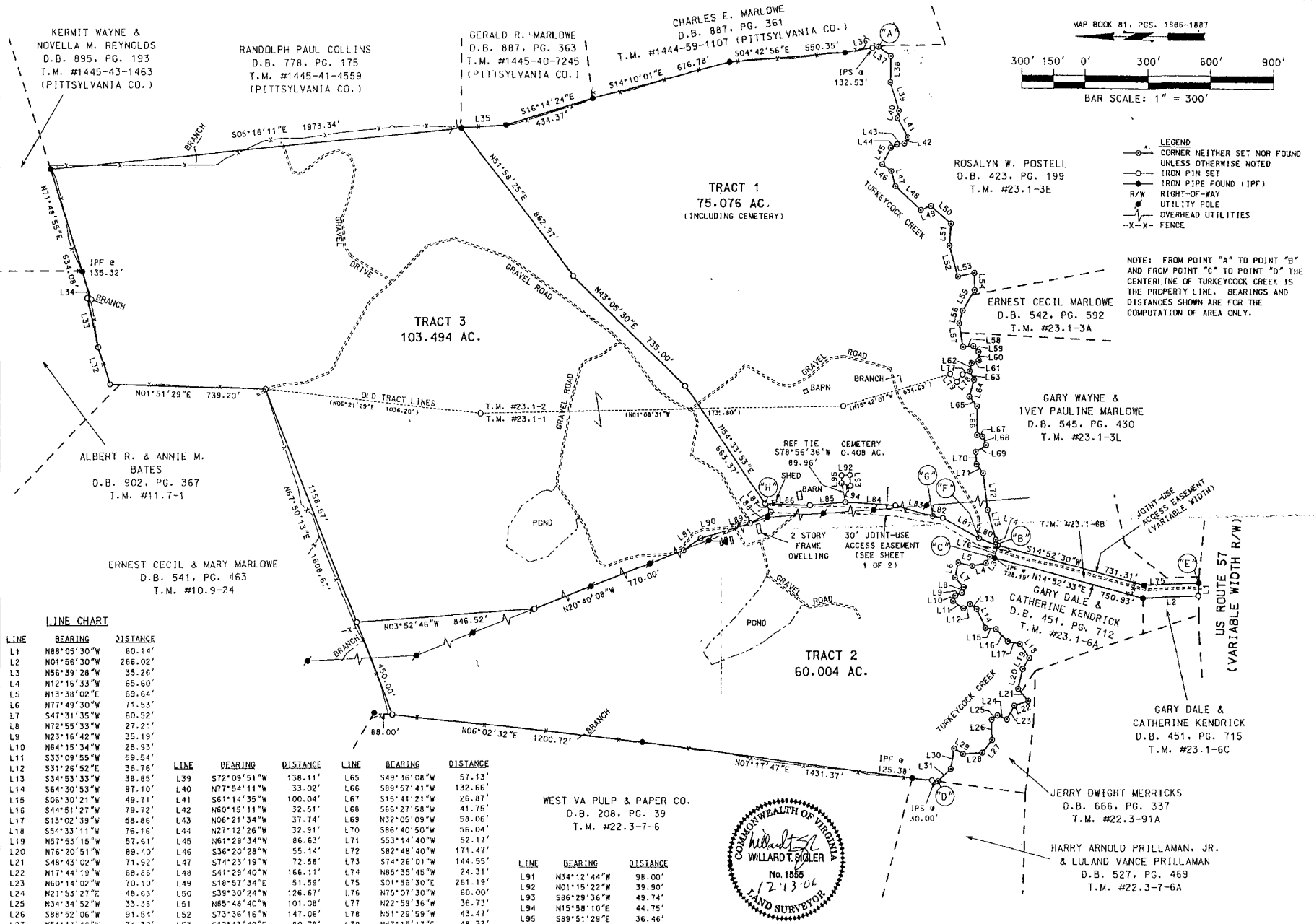


- LEGEND**
- CORNER NEITHER SET NOR FOUND UNLESS OTHERWISE NOTED
  - IRON PIN SET
  - IRON PIPE FOUND (IPF)
  - R/W RIGHT-OF-WAY
  - UTILITY POLE
  - OVERHEAD UTILITIES
  - X-X- FENCE

NOTE: FROM POINT "A" TO POINT "B" AND FROM POINT "C" TO POINT "D" THE CENTERLINE OF TURKEYCOCK CREEK IS THE PROPERTY LINE. BEARINGS AND DISTANCES SHOWN ARE FOR THE COMPUTATION OF AREA ONLY.



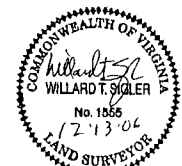
**LINE CHART**

LINE	BEARING	DISTANCE
L1	N88°05'30"W	60.14'
L2	N01°56'30"W	266.02'
L3	N56°39'28"W	35.26'
L4	N12°16'33"W	65.60'
L5	N13°38'02"E	69.64'
L6	N77°49'30"W	71.53'
L7	S47°31'35"W	60.52'
L8	N72°55'33"W	27.21'
L9	N23°16'42"W	35.19'
L10	N64°15'34"W	28.93'
L11	S33°08'55"W	59.54'
L12	S31°26'52"E	36.76'
L13	S34°53'33"W	38.85'
L14	S64°30'53"W	97.10'
L15	S06°30'21"W	49.71'
L16	S44°51'27"W	79.72'
L17	S13°02'39"W	58.86'
L18	S54°33'11"W	76.16'
L19	N57°53'15"W	57.61'
L20	N76°20'51"W	89.40'
L21	S48°43'02"W	71.92'
L22	N17°44'19"W	68.86'
L23	N60°14'02"W	70.10'
L24	N21°53'27"E	48.65'
L25	N34°34'52"W	33.38'
L26	S88°52'06"W	91.54'
L27	N51°17'48"W	74.30'
L28	N03°40'16"W	92.20'
L29	N30°02'05"E	49.16'
L30	N80°20'45"W	93.74'
L31	N42°12'03"W	83.35'
L32	N72°10'55"E	178.20'
L33	N76°54'33"E	229.02'
L34	S19°38'28"W	19.80'
L35	S03°46'39"E	211.99'
L36	S09°23'56"E	162.53'
L37	S35°46'17"W	72.81'
L38	N88°29'02"W	119.52'

LINE	BEARING	DISTANCE	LINE	BEARING	DISTANCE
L39	S72°09'51"W	138.11'	L65	S49°36'08"W	57.73'
L40	N77°54'11"W	33.02'	L66	S89°57'41"W	132.66'
L41	S61°14'35"W	100.04'	L67	S15°41'21"W	26.87'
L42	N60°15'11"W	32.51'	L68	S66°27'58"W	41.75'
L43	N06°21'34"W	37.74'	L69	N32°05'09"W	58.06'
L44	N27°12'26"W	32.91'	L70	S86°40'50"W	56.04'
L45	N61°29'34"W	86.63'	L71	S53°14'40"W	52.17'
L46	S36°20'28"W	55.14'	L72	S82°48'40"W	171.47'
L47	S74°23'19"W	72.58'	L73	S74°26'01"W	144.55'
L48	S41°28'40"W	166.11'	L74	N85°35'45"W	24.31'
L49	S18°57'34"E	51.59'	L75	S01°56'30"E	261.19'
L50	S39°30'24"W	126.67'	L76	N75°07'30"W	60.00'
L51	N85°48'40"W	101.08'	L77	N22°59'36"W	36.73'
L52	S73°36'16"W	147.06'	L78	N01°29'59"W	43.47'
L53	S12°13'49"E	80.78'	L79	N47°15'17"E	48.33'
L54	S88°53'07"W	78.68'	L80	N21°08'42"E	82.82'
L55	N58°37'27"W	109.58'	L81	N28°48'11"E	197.90'
L56	N74°52'14"W	59.55'	L82	N10°21'14"E	49.44'
L57	S80°32'28"W	109.27'	L83	N16°02'01"E	189.36'
L58	S04°27'22"E	49.10'	L84	N03°38'36"E	238.61'
L59	S47°58'54"W	38.44'	L85	N04°32'48"W	70.12'
L60	S88°31'37"W	38.44'	L86	N01°41'42"E	212.80'
L61	N20°58'34"W	37.69'	L87	S52°14'34"W	45.42'
L62	N76°15'54"W	39.35'	L88	N29°03'06"W	112.94'
L63	S61°20'31"W	44.00'	L89	N17°16'30"W	121.00'
L64	N74°22'38"W	81.06'	L90	N15°07'50"W	128.34'

WEST VA PULP & PAPER CO.  
D.B. 208, PG. 39  
T.M. #22.3-7-6

LINE	BEARING	DISTANCE
L91	N34°12'44"W	98.00'
L92	N01°15'22"W	39.90'
L93	S86°29'36"W	49.74'
L94	N15°58'10"E	44.75'
L95	S89°51'29"E	36.46'



**BERKLEY-HOWELL & ASSOC., P.C.**  
ENGINEERS - SURVEYORS - PLANNERS  
306 ENTERPRISE DRIVE, SUITE C  
FOREST, VIRGINIA 24551  
PHONE: (434)385-7548 FAX: (434)385-6178

RECONFIGURATION OF  
**TURKEYCOCK MEADOWS**  
FOR CEDAR CREEK LAND CO., LLC  
IRISWOOD DISTRICT - HENRY COUNTY, VA

SCALE: 1" = 300'  
DATE: DECEMBER 13, 2006  
COMM. NO. 060433  
F.B. REF. 06-5  
SHEET 2 OF 2